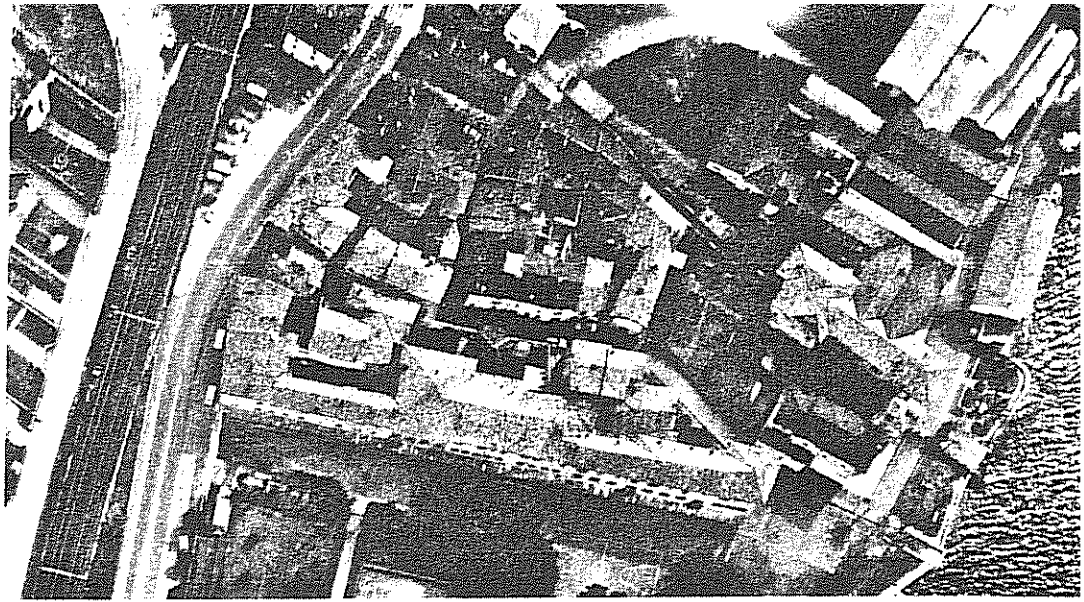


TAV. LXI

Fig. 23: MAROGGIA - Chiesa di San Pietro. Veduta aerea: la chiesa prolunga il piccolo nucleo vecchio verso la riva del lago al quale fa fronte con la facciata e il campanile (Foto Pastorelli, Lugano 1971)



151 MAROGGIA

1 Chiesa di San Pietro

costruzioni preromaniche 1 e 2  
planimetria dello scavo

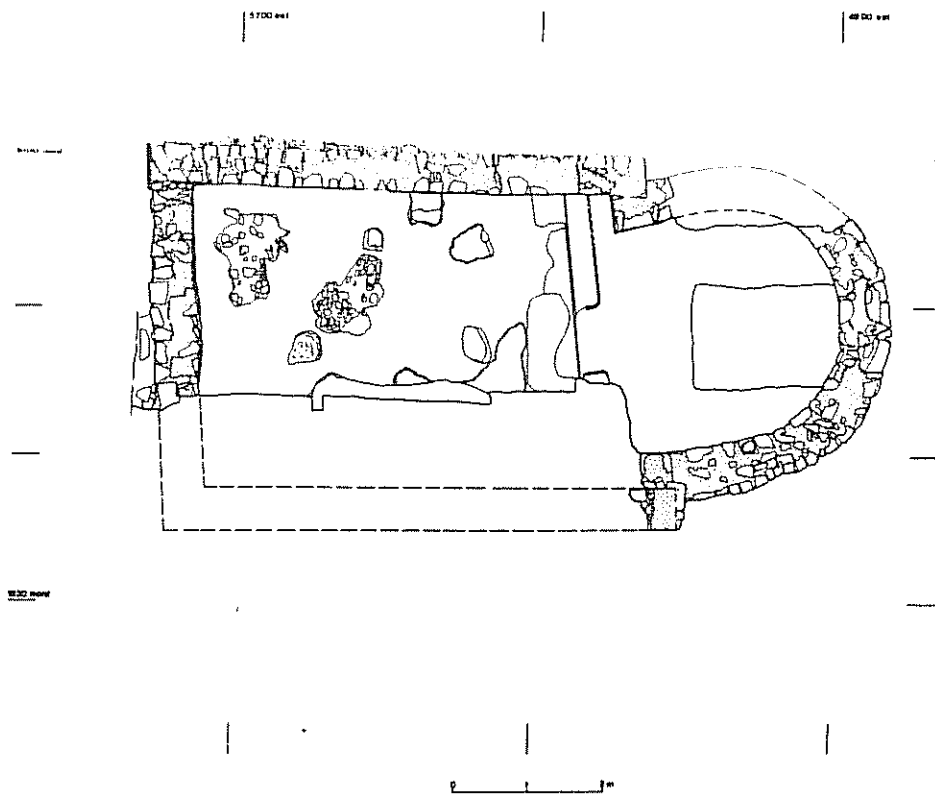


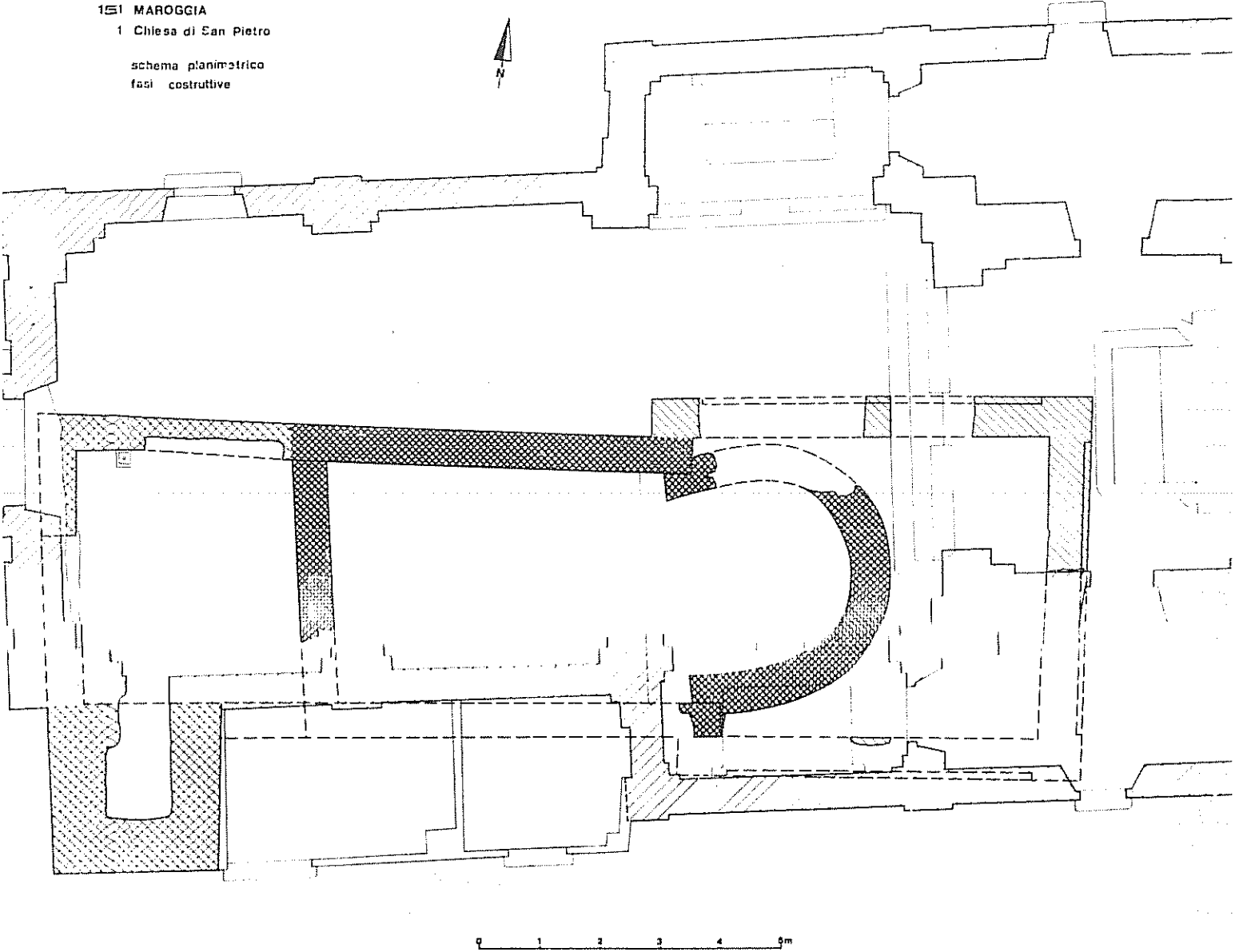
Fig. 24: MAROGGIA - Chiesa di San Pietro. Planimetria di scavo.

U.C.M.S. 1973

151 MAROGGIA

1 Chiesa di San Pietro

schema planimetrico  
fasi costruttive



0 1 2 3 4 5m



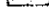

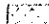
-  oggetto recente
-  chiesa del XVII sec.
-  chiesa del XIV-XV sec.
-  chiesa romanica
-  chiesa paleocristiana

Fig. 25. MAROGGIA - Chiesa di San Pietro.  
Schema dissuntivo

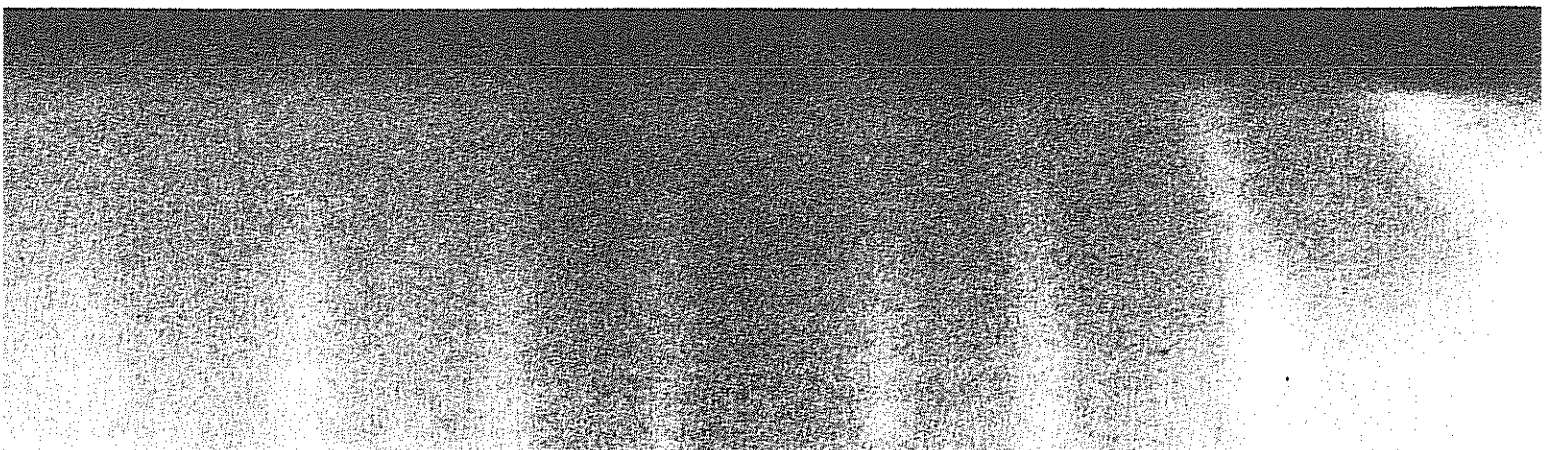




Fig. 26: NAROGGIA -  
Chiesa di San Pietro.  
La chiesa preromanica  
a scavo ultimato,  
da ovest

TAV. LXIV

Fig. 27: MENDRISIO -  
Chiesa di San Martino.  
Veduta aerea  
(cfr. planimetria riassuntiva)  
(Foto Pastorelli, Lugano,  
1971).

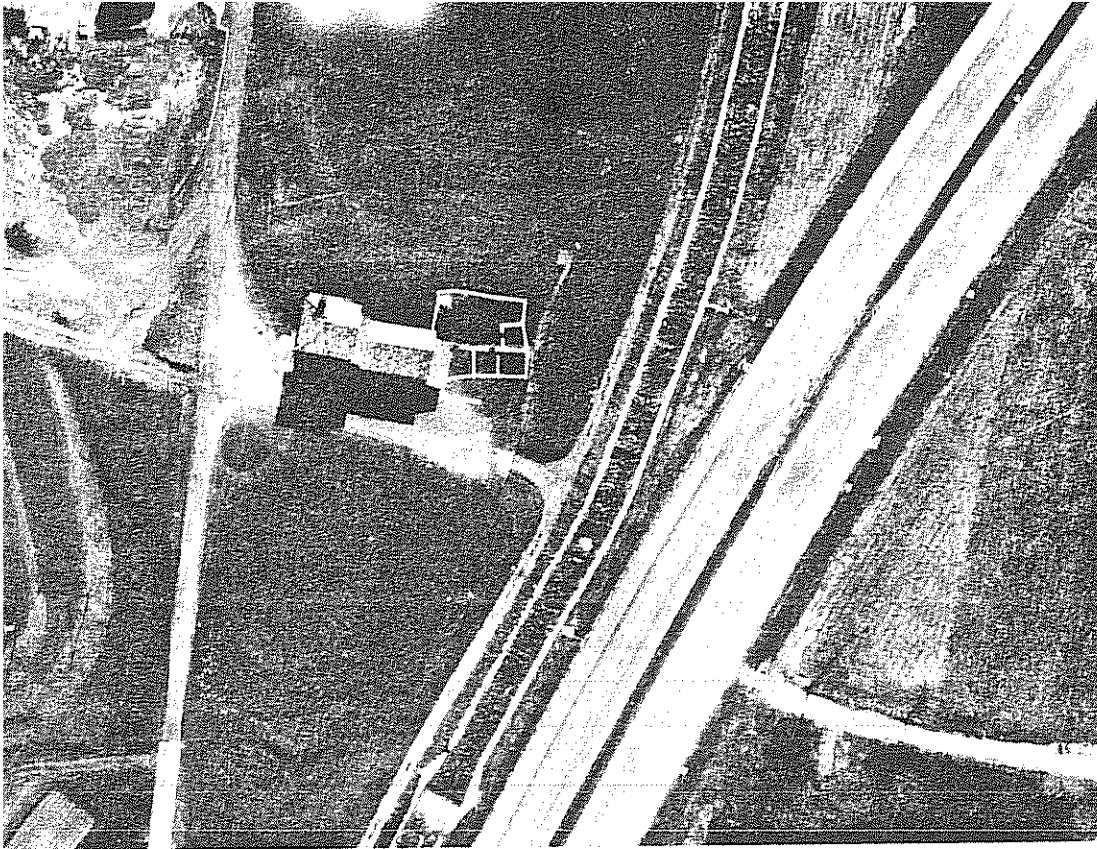


Fig. 28: MENDRISIO -  
Chiesa di San Martino.  
Vista da nord.

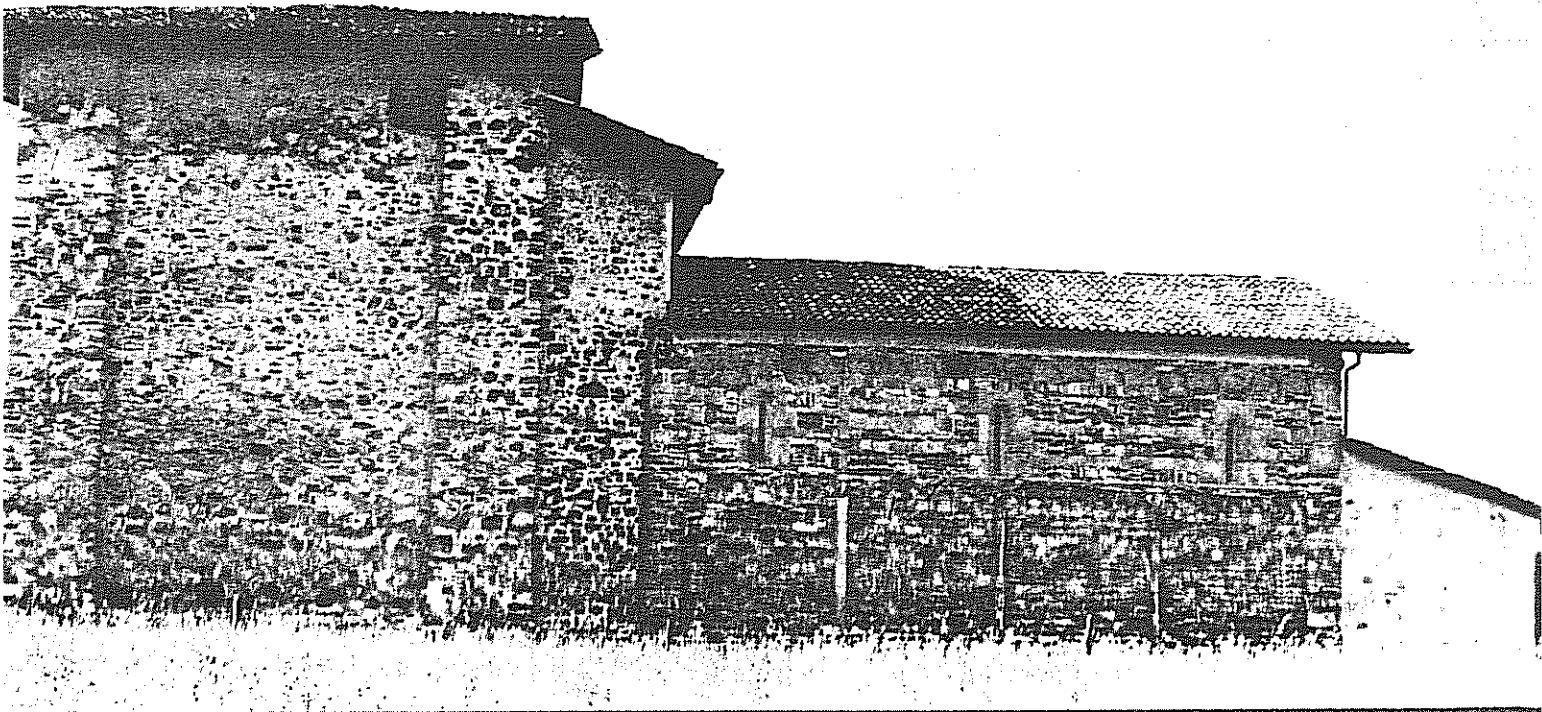


Fig. 28: MENDRISIO - Chiesa di San Martino.  
Planimetria di scavo.

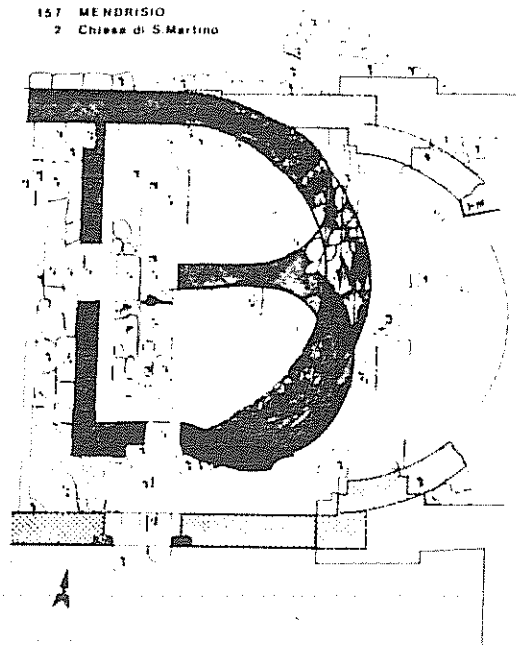
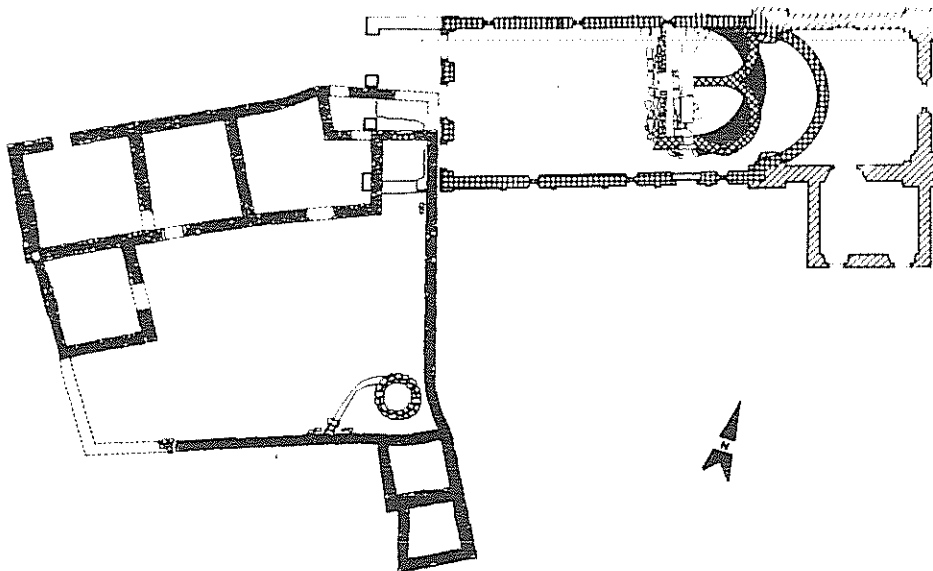


Fig. 30 MENDRISIO - Chiesa di San Martino.  
Planimetria riassuntiva.

157 MENDRISIO  
2 Chiesa di S. Martino  
schema planimetrico  
tec. costruttive

- XVII<sup>o</sup> sec.
- XI<sup>o</sup> - XII<sup>o</sup> sec.
- I<sup>a</sup> sec.
- VII<sup>o</sup> - VIII<sup>o</sup> sec.
- non datato



0 1 2 3 4 5m

Rilievo dell'Arch. Guido Borella - Lugano  
Ridisegnato dall'U.C.M.S. nel 1977

Fig. 4: QUINTO - Chiesa dei SS. Pietro e Paolo.  
Veduta aerea.

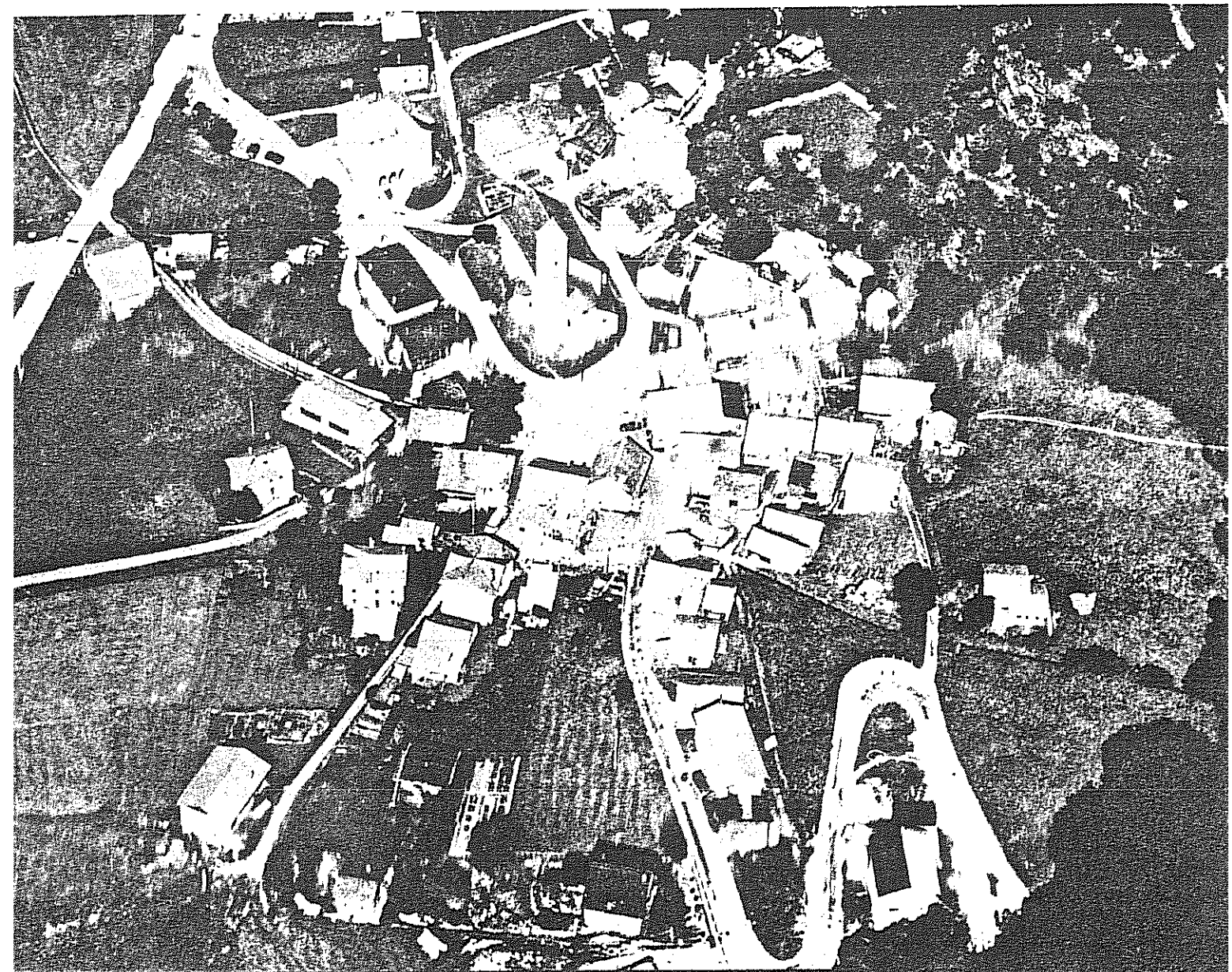


Fig. 3. MENDISIO - Chiesa di San Martino.  
Veduta dello scavo.

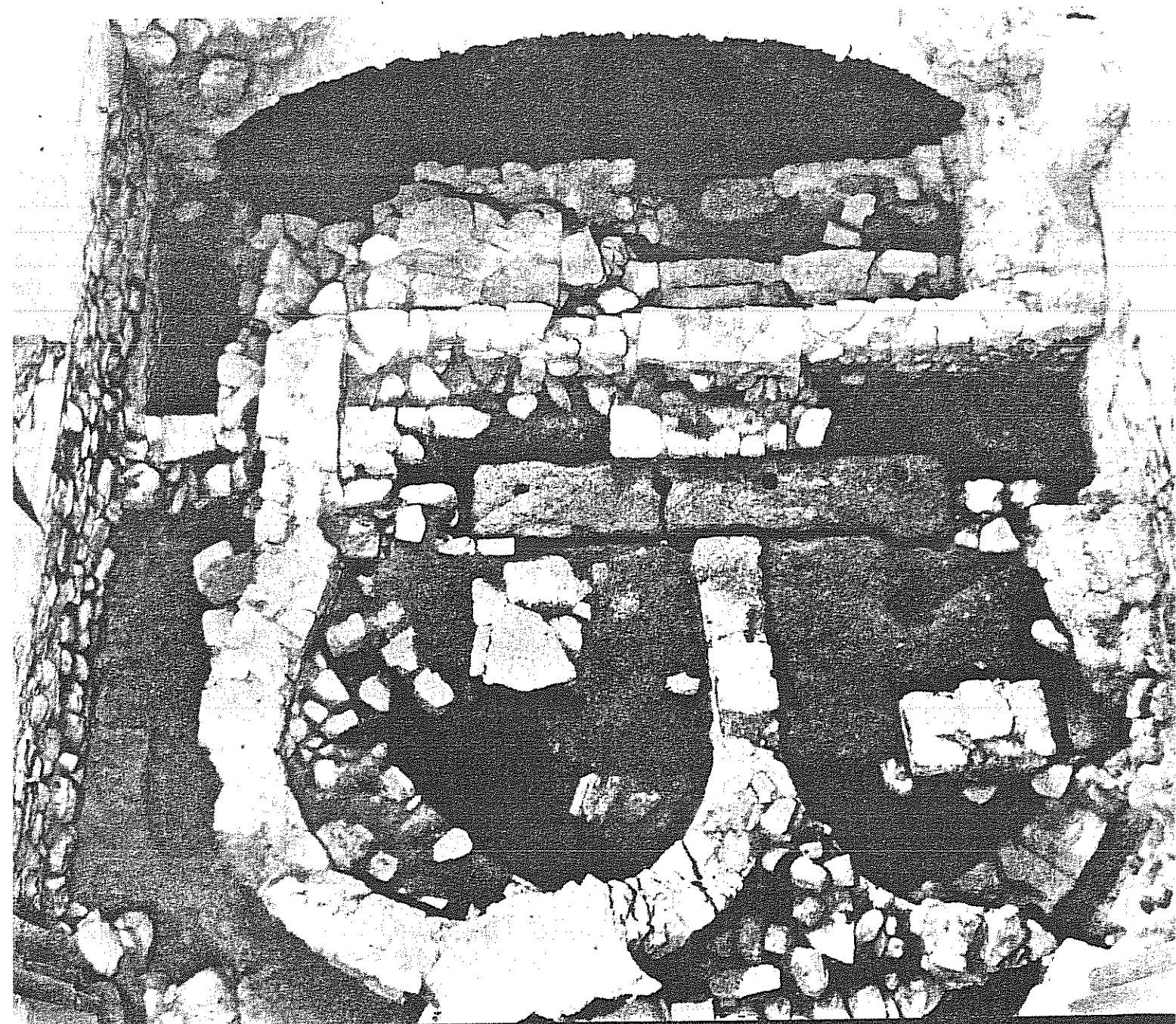


Fig. 32: MORBIO INFERIORE - Chiesa di San Giorgio. Veduta aerea (Foto Pastorelli, 1974).

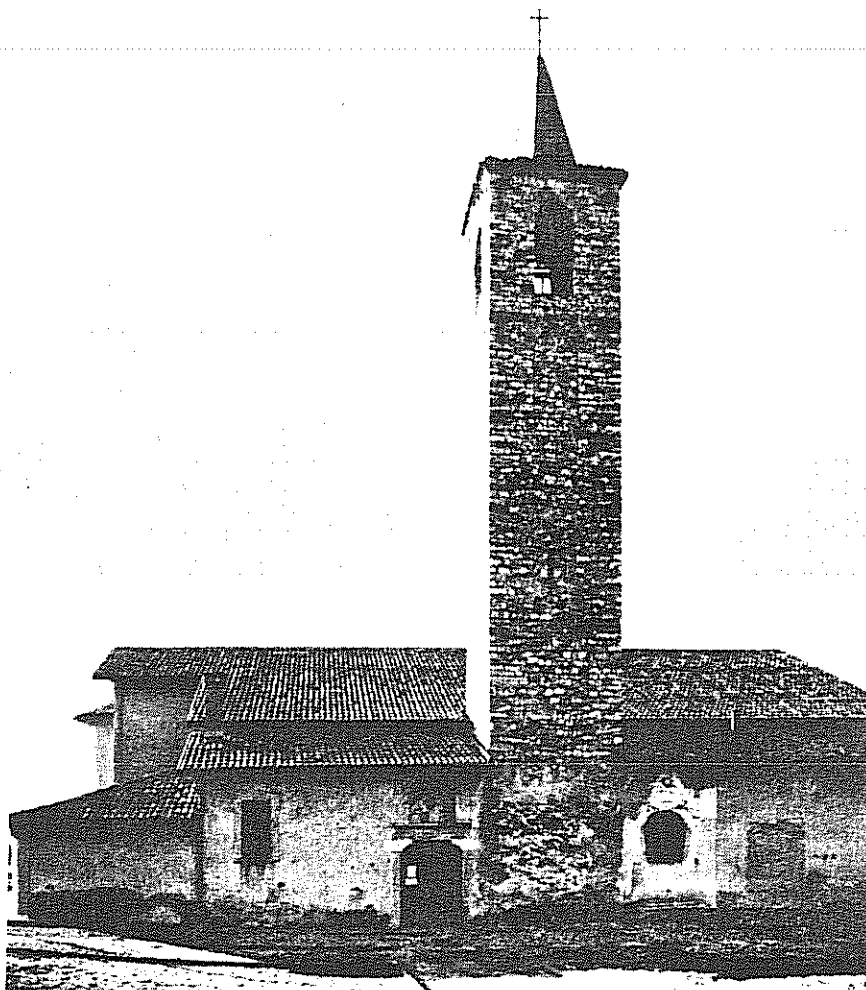
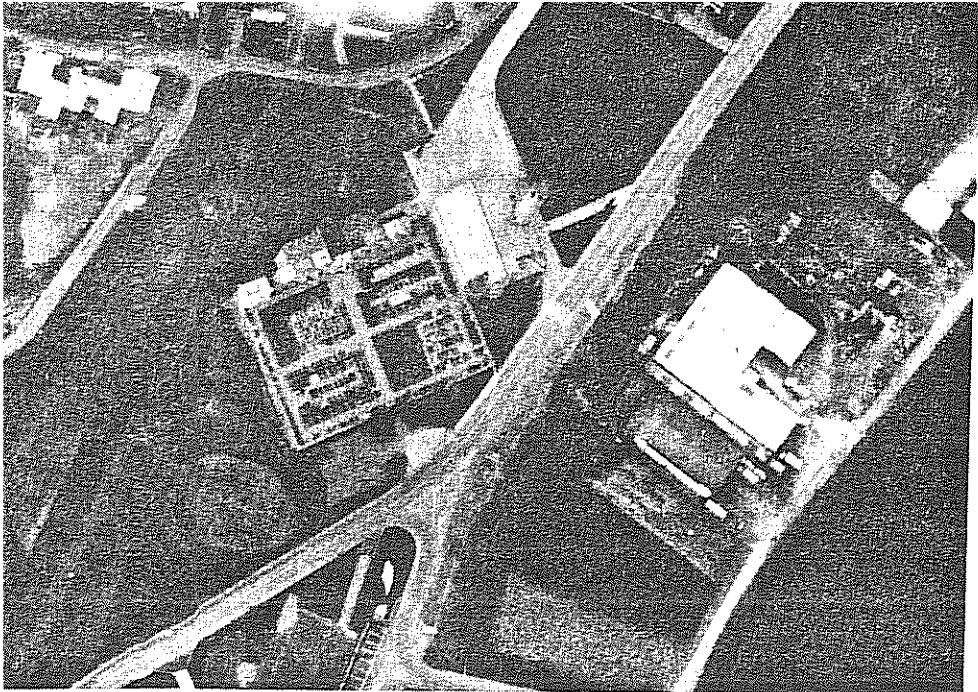


Fig. 33: MORBIO INFERIORE - Chiesa di San Giorgio. Vista da nord.