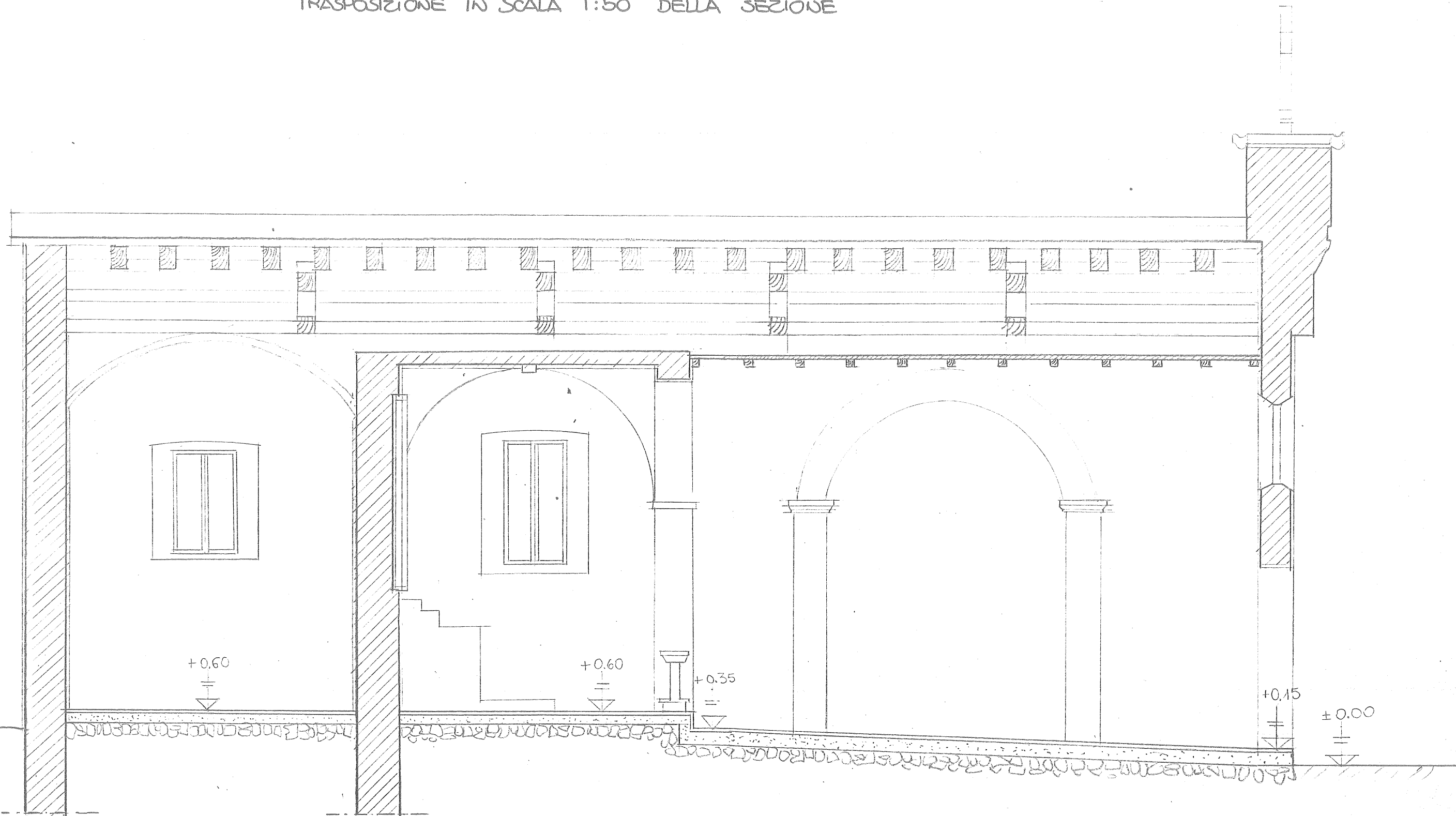
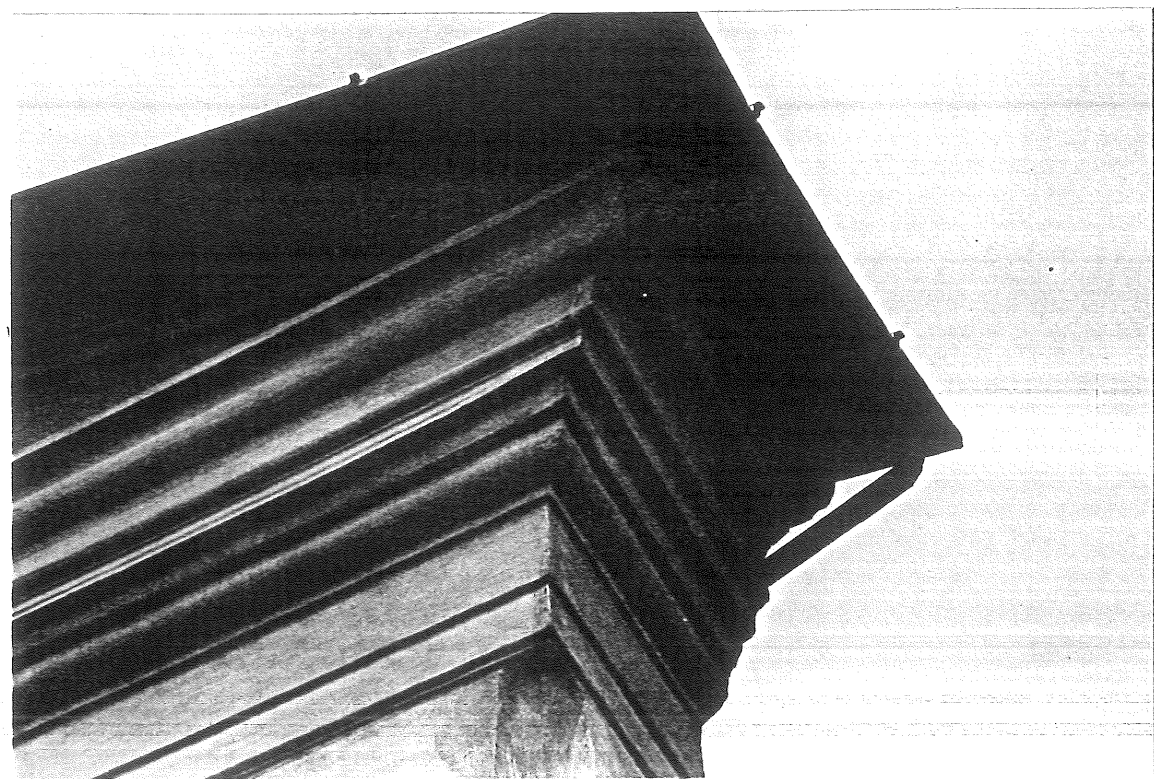
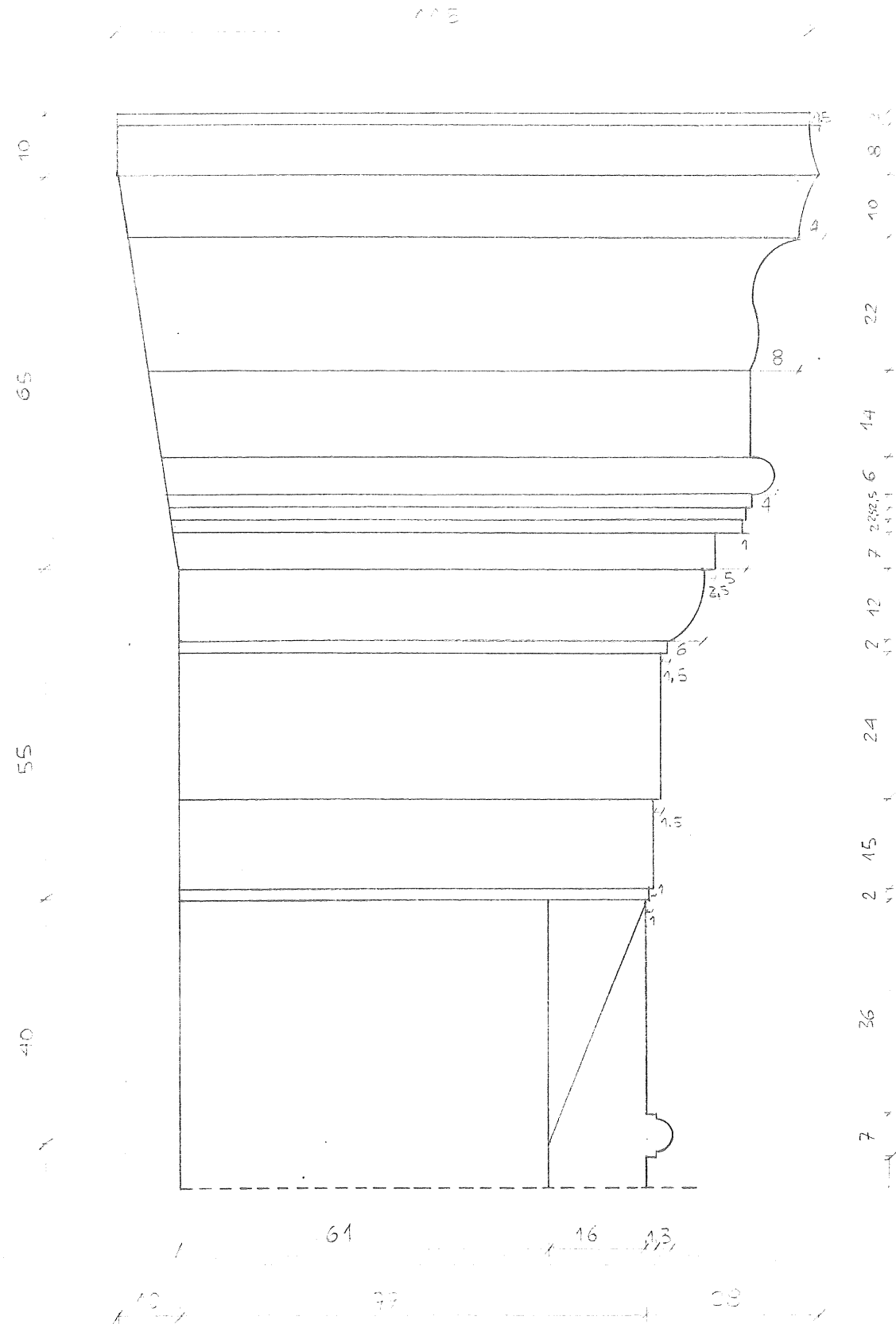


TRASPOSIZIONE IN SCALA 1:50 DELLA SEZIONE

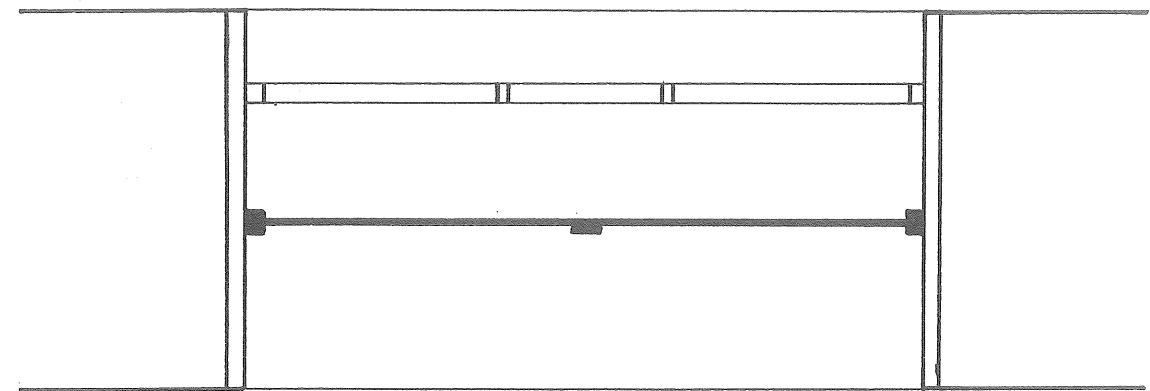
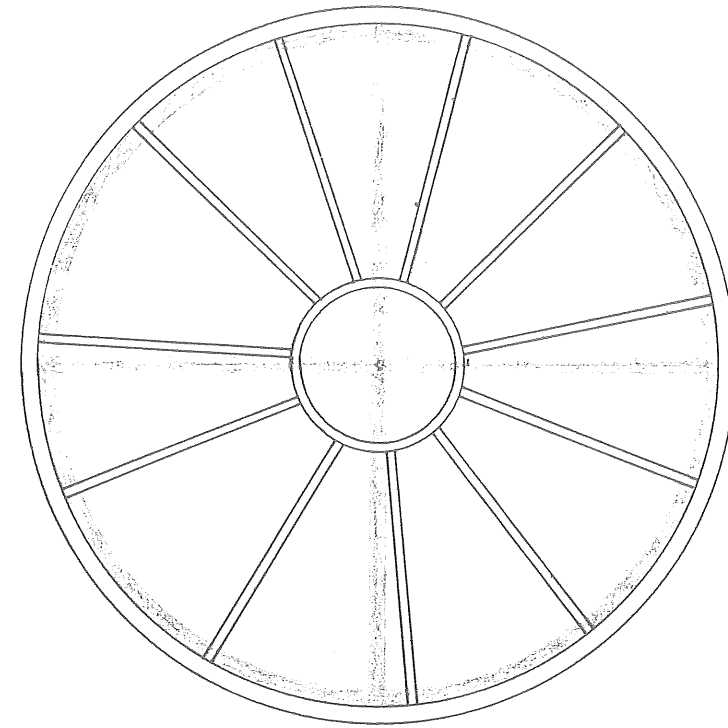
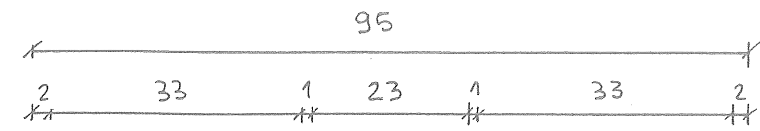
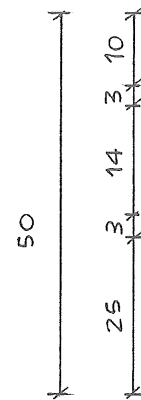
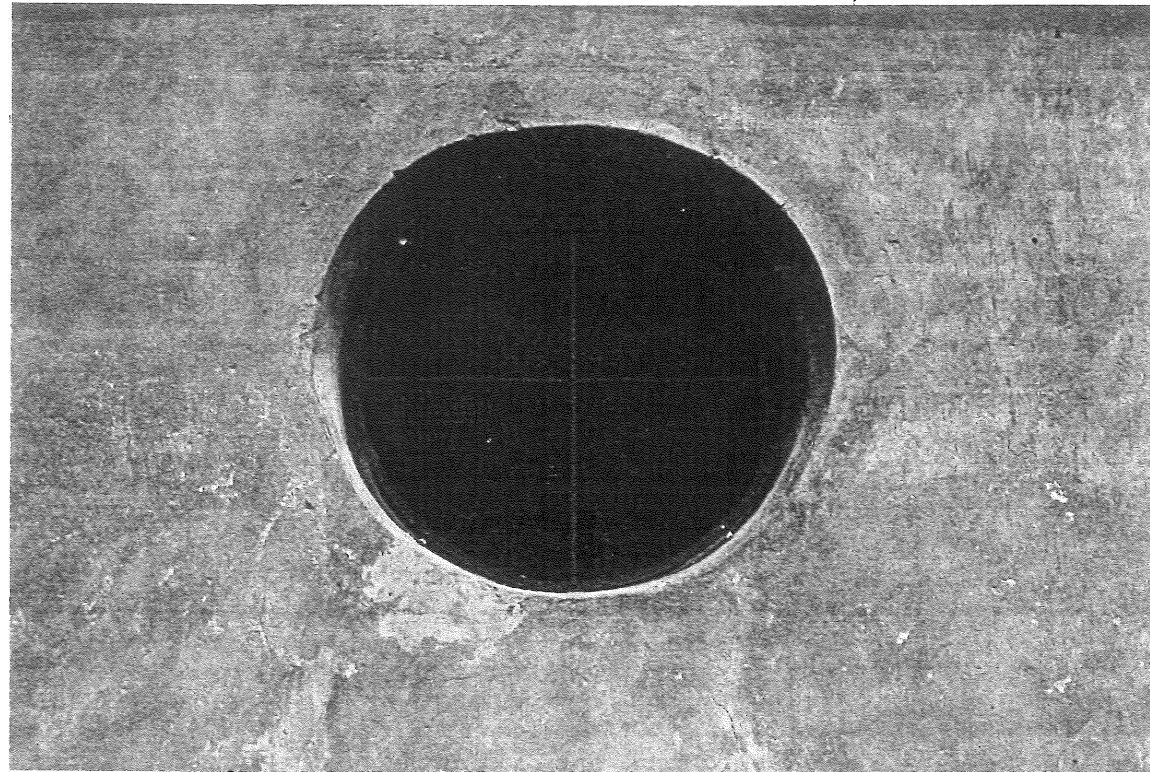


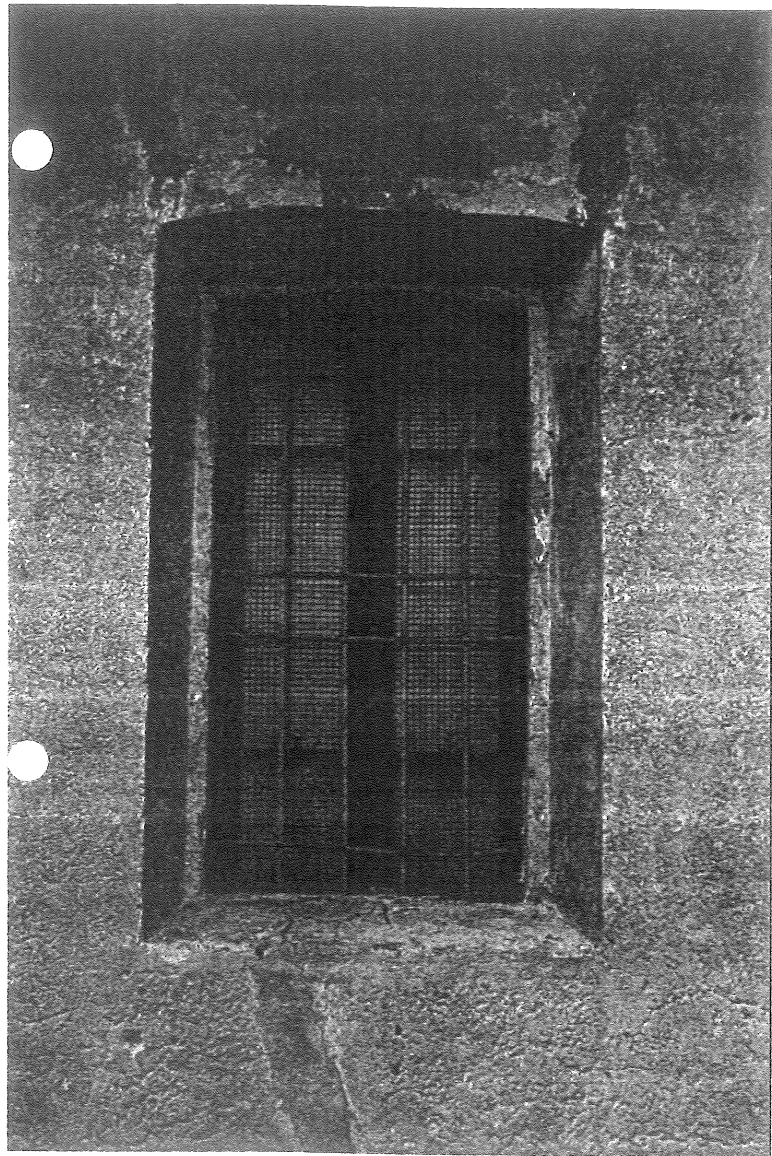


RILIEVO DI PARTICOLARE ARCHITETTONICO : ARCHITRAVE
 IL RILIEVO E' STATO EFFETTUATO TRAMITE CONTRONTO
 CON LE FOTOGRAFIE. SCALA 1:10



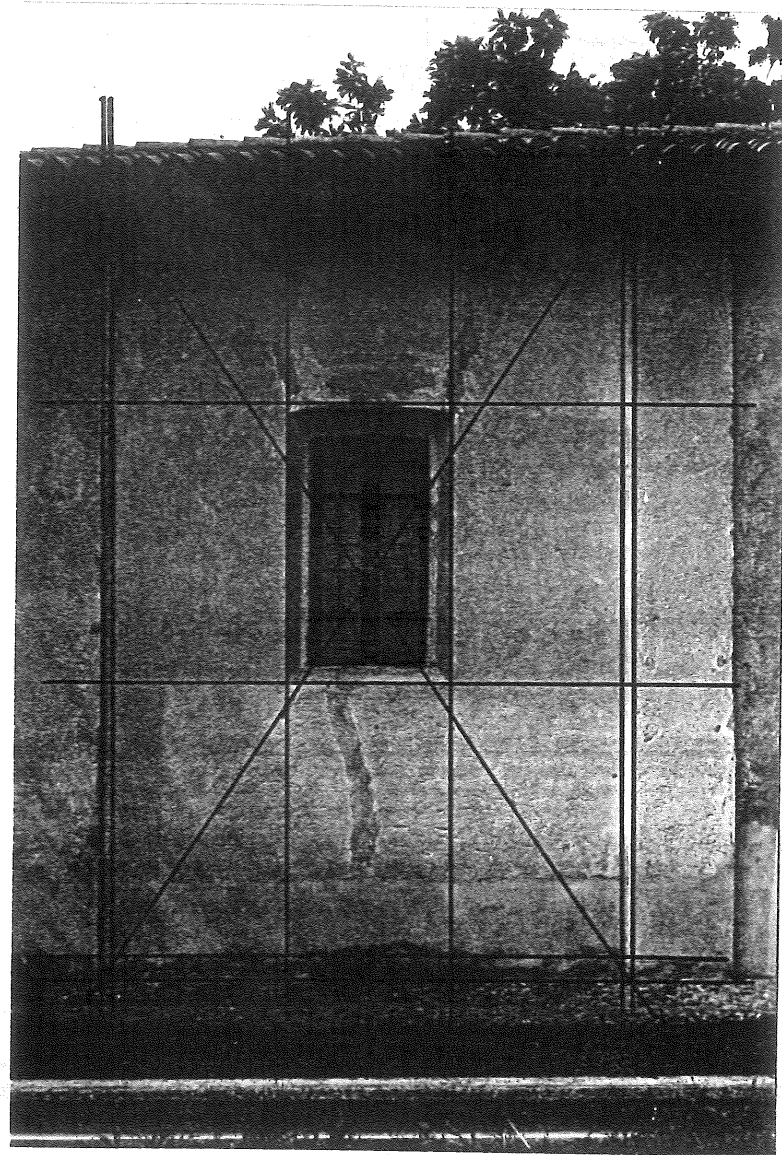
RILIEVO DI PARTICOLARE ARCHITETTONICO: ROSONE
IL RILIEVO E' STATO EFFETTUATO PER CONFRONTO
TRAMITE LE FOTOGRAFIE. SCALA 1:10





SULLA FOTOGRAFIA CHE RITRAE UNA PARTE DELLA MURATURA ESTERNA E' STATA COSTRUITA UNA GRIGLIA SERVENDOSI DI UN ELEMENTO ORDINATORE LE CUI MISURE ERANO NOTE SERVENDOSI POI DI TALE GRIGLIA SI E' RICOSTRUITO IL PROSPETTO

110



175

