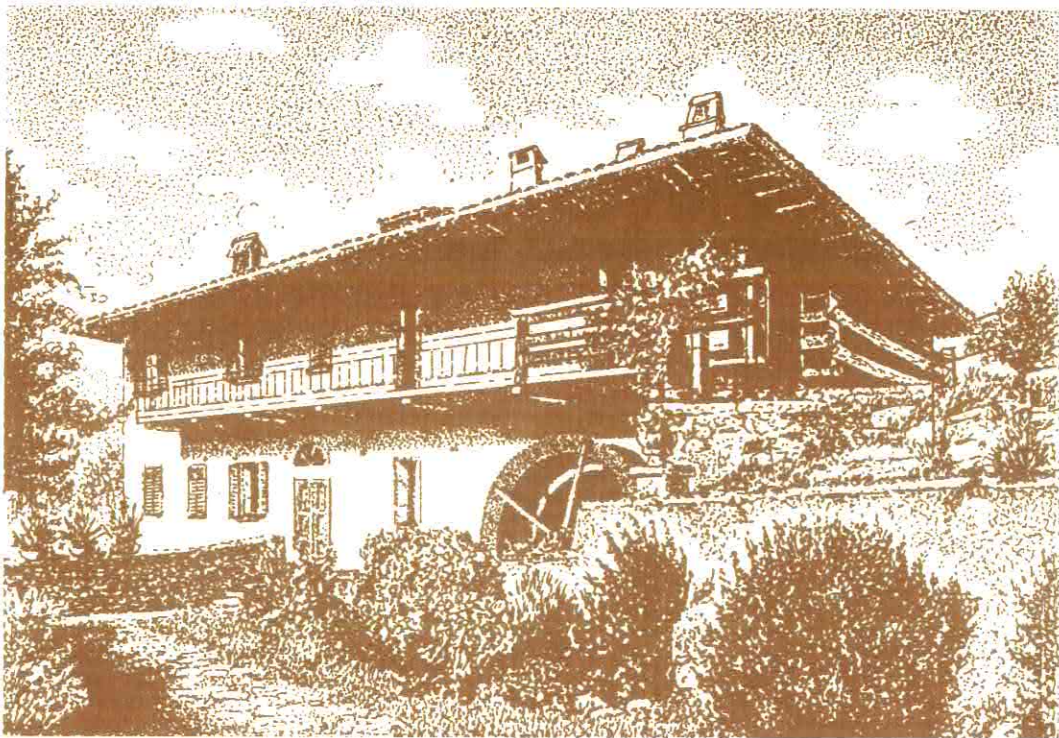


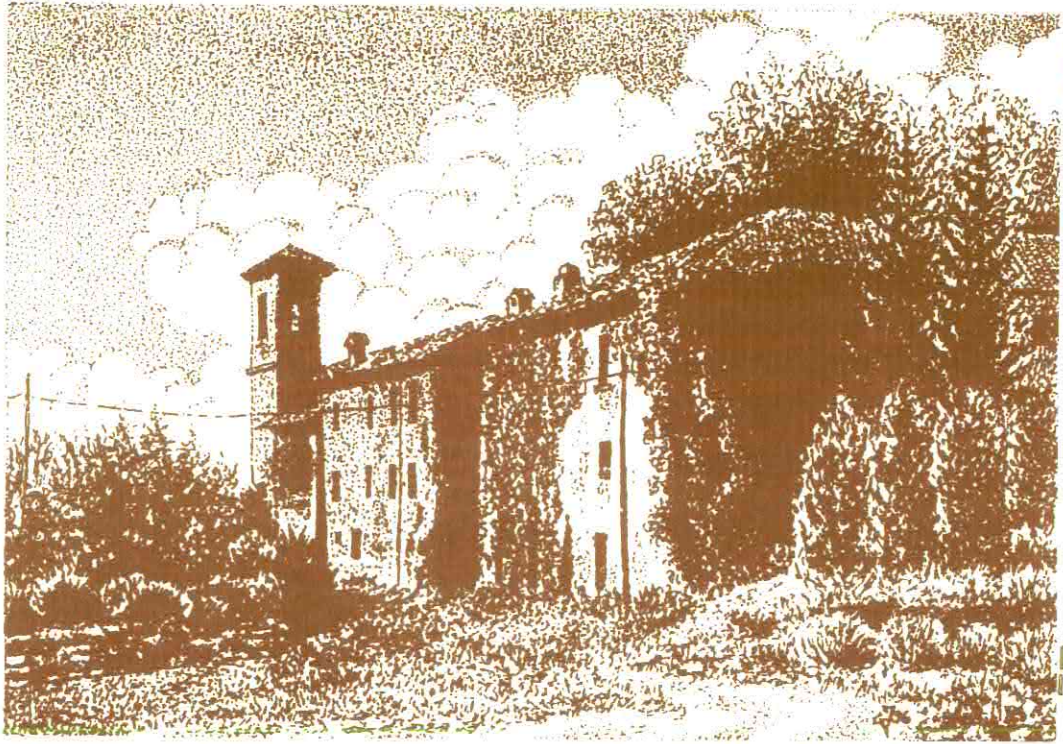
1996. Carlo Ferrario.

Oneda, chiesa di San Francesco.

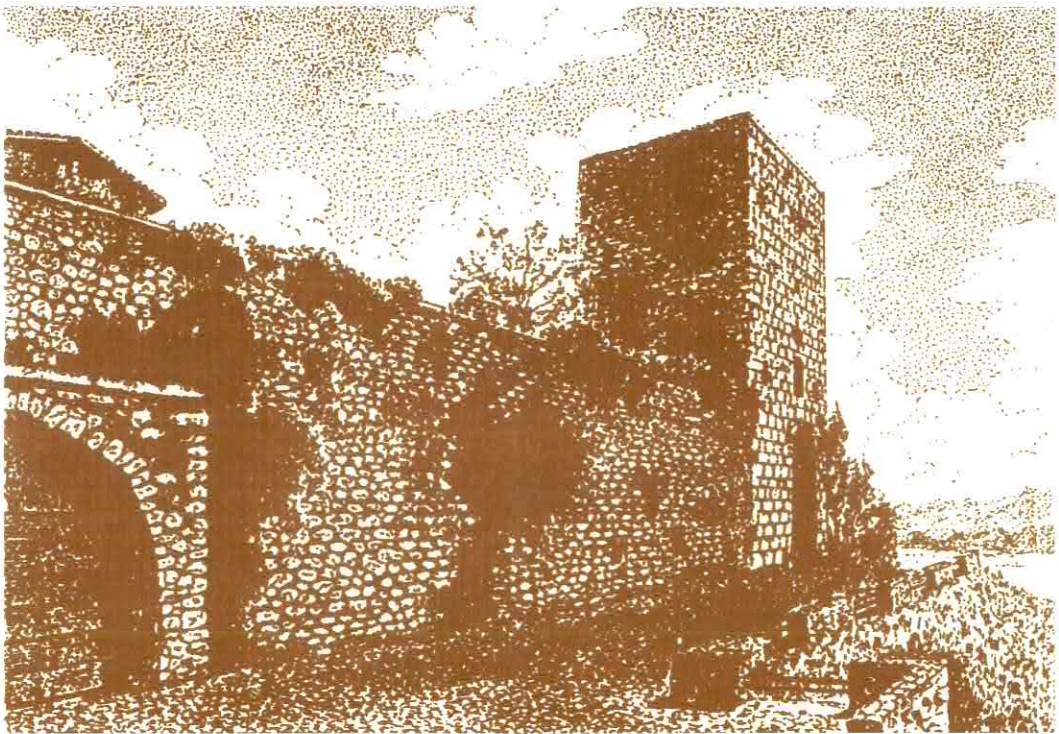


1996. Carlo Ferrario.

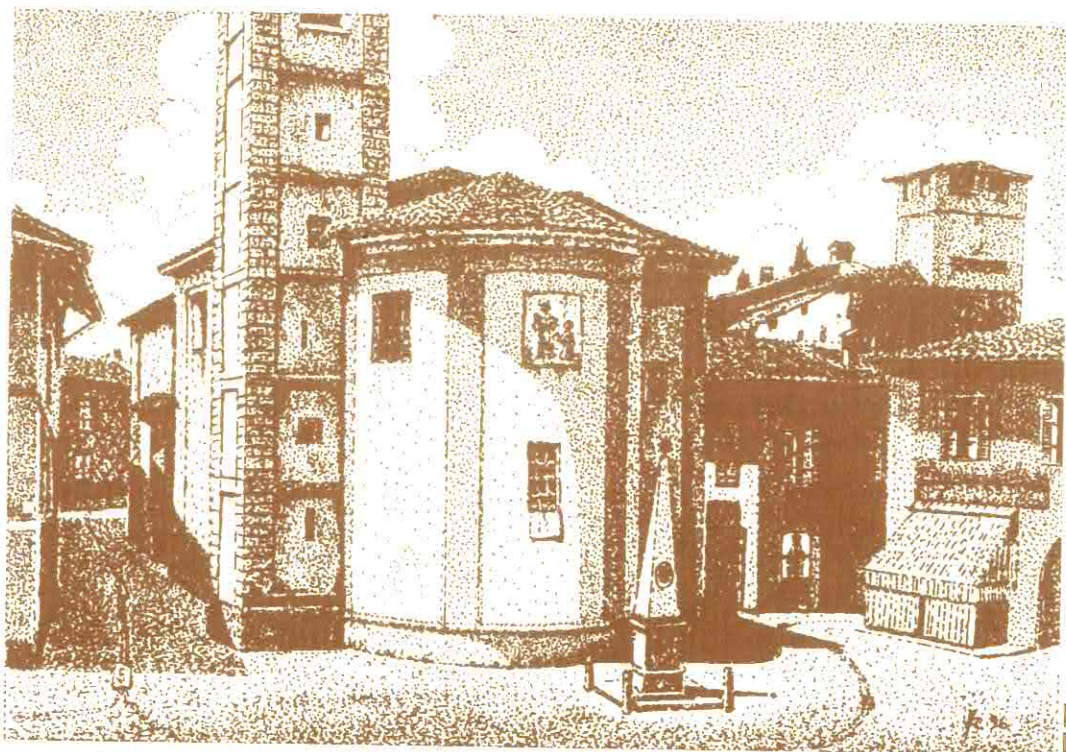
Oriano Ticino Inferiore, Mulino Gadda.



1996. Carlo Ferrario. *Lentate Verbano Castello e chiesa vecchia di San Materno.*



1996. Carlo Ferrario. *Lisanza, Torre.*



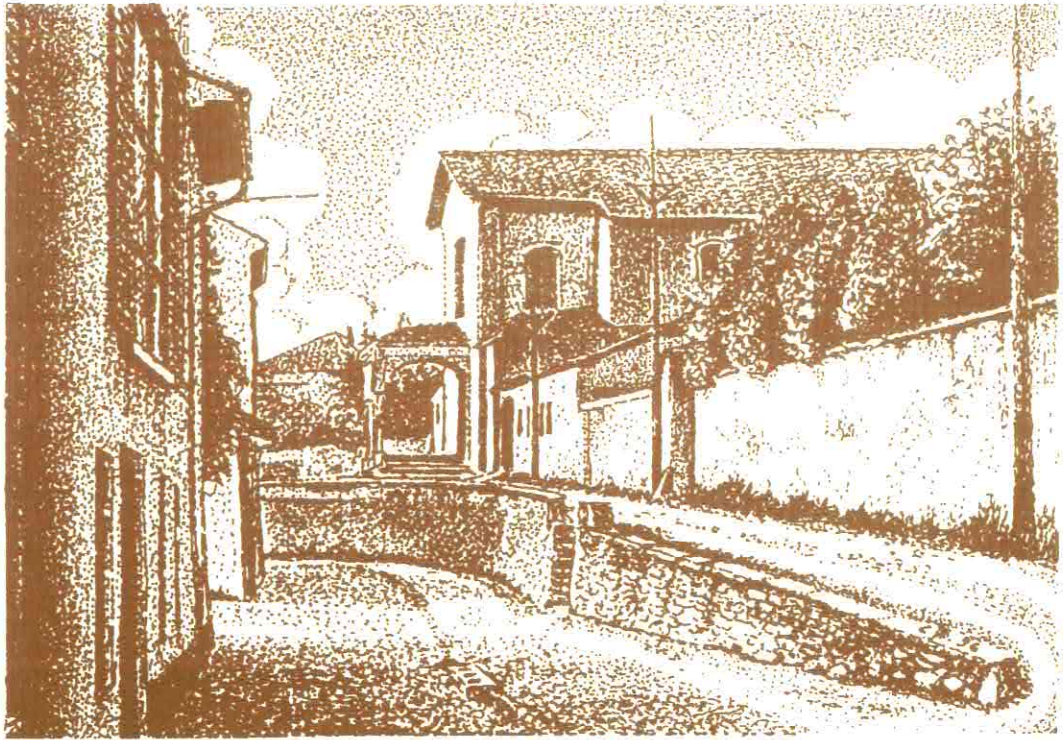
1996. Carlo Ferrario.

*Sesto Calende, chiesa vecchia di San Bernardino, ante 1904.*



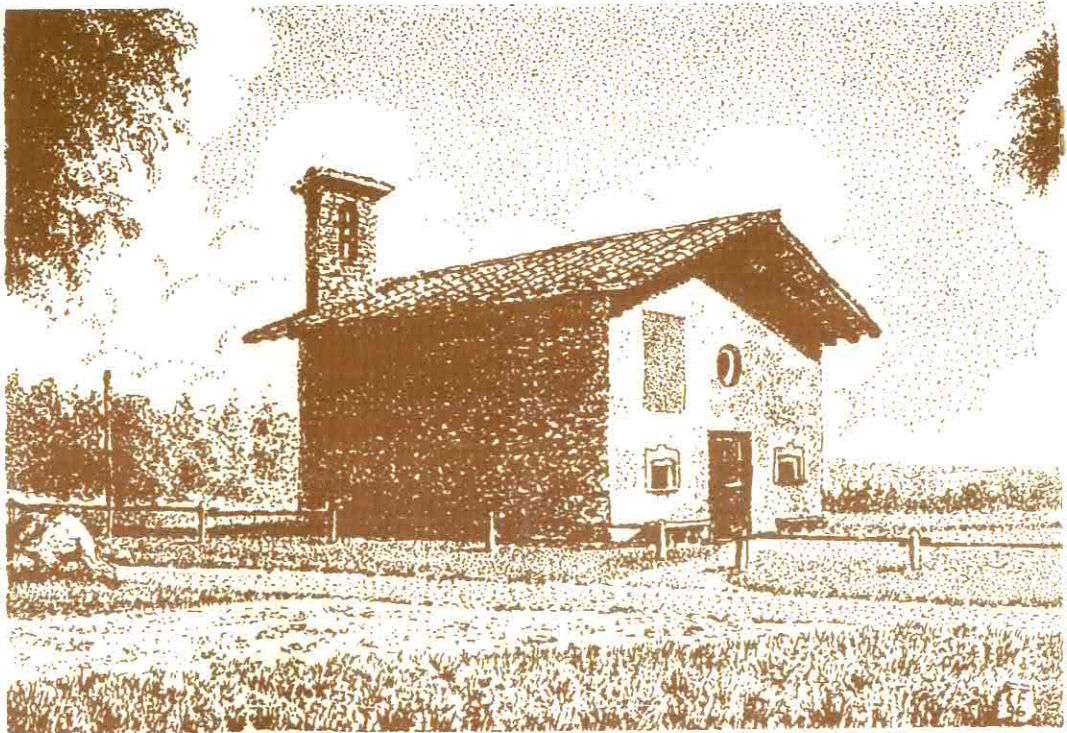
1996. Carlo Ferrario.

*Sesto Calende, viale Umberto I, fine secolo scorso.*



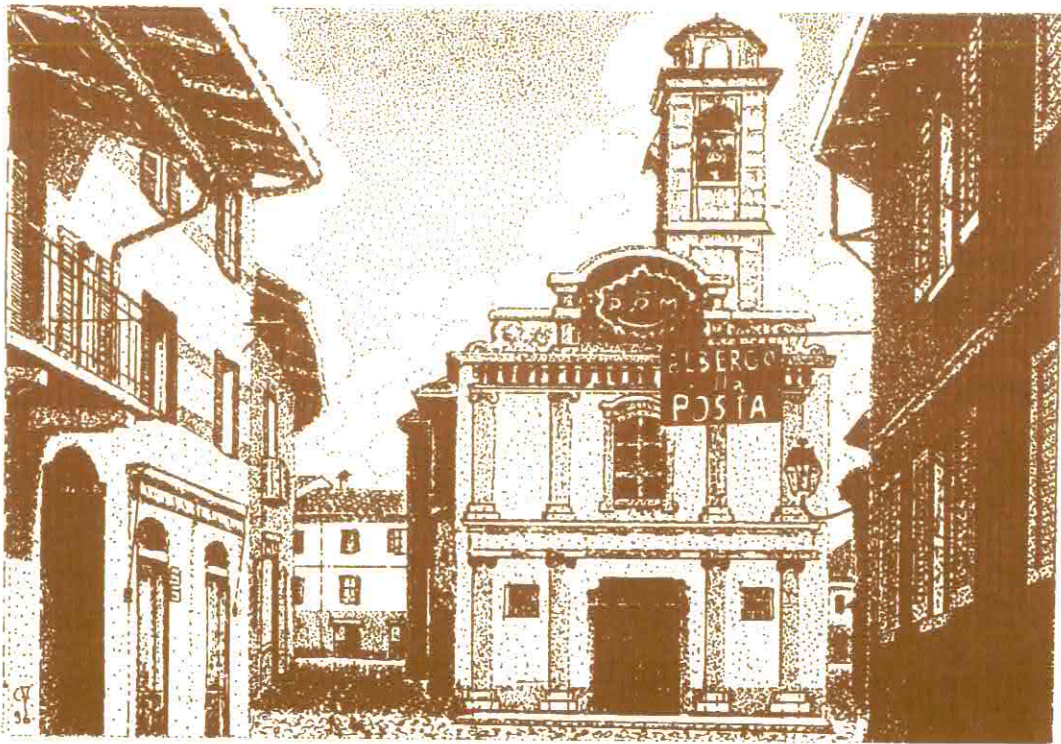
1996. Carlo Ferrario.

Sesto Calende, chiesa di San Giuseppe (demolita nel 1939).



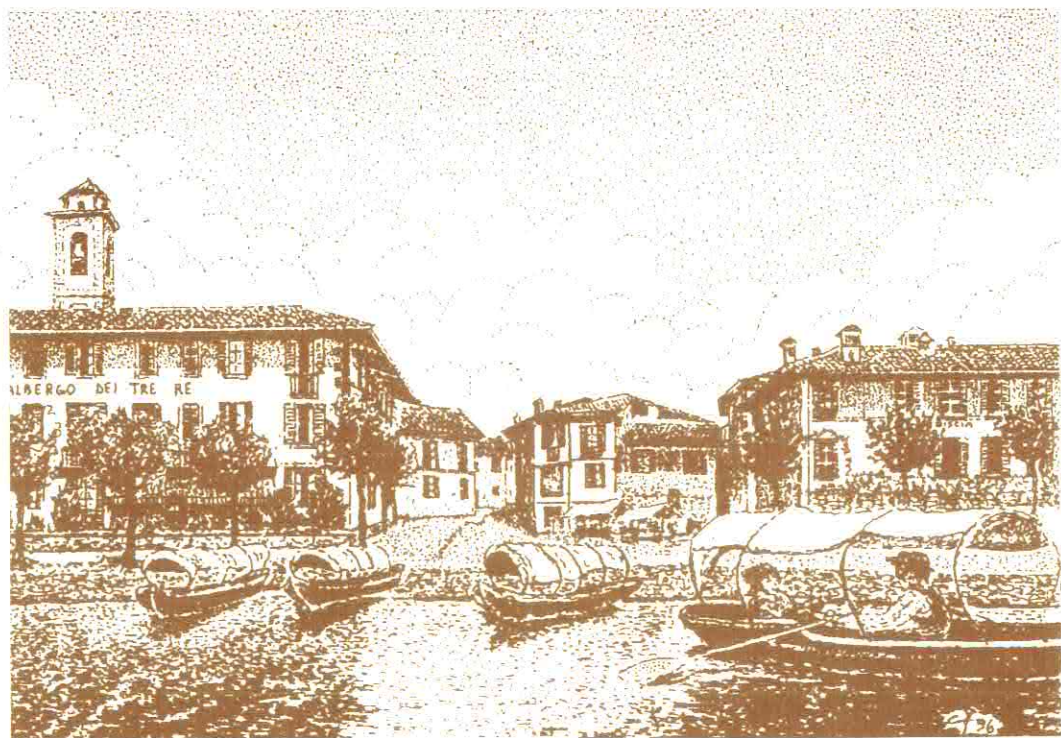
1996. Carlo Ferrario.

Sesto Calende, oratorio di San Vincenzo.



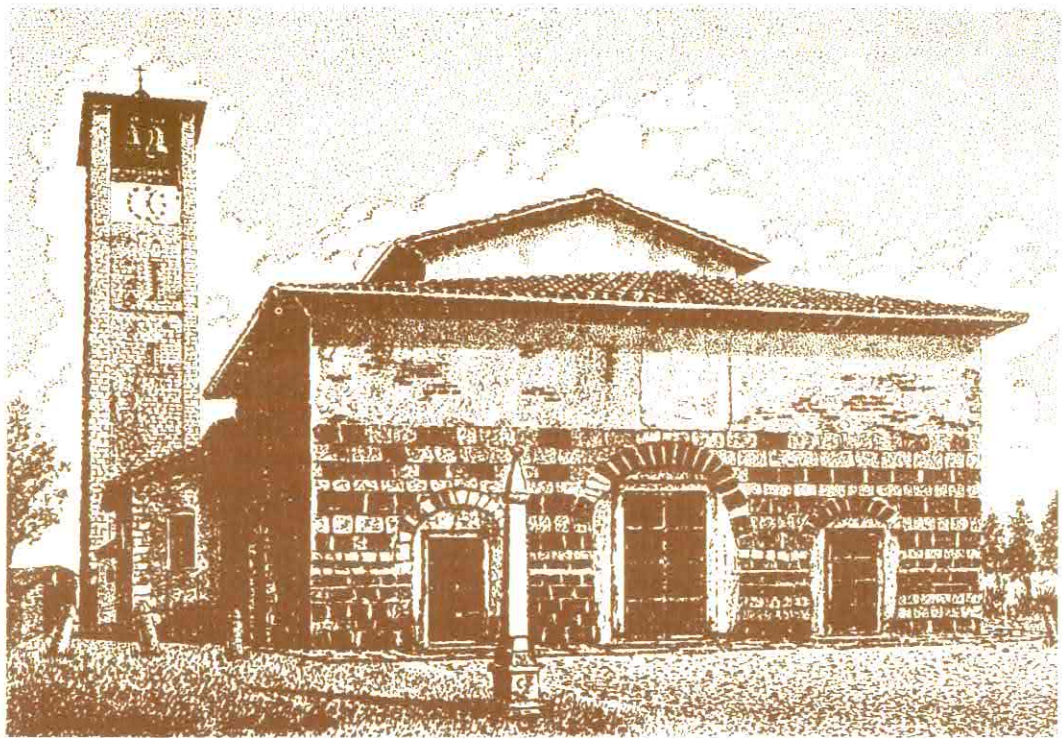
1996, Carlo Ferrario.

Sesto Calende, chiesa vecchia di San Bernardino, ante 1904.



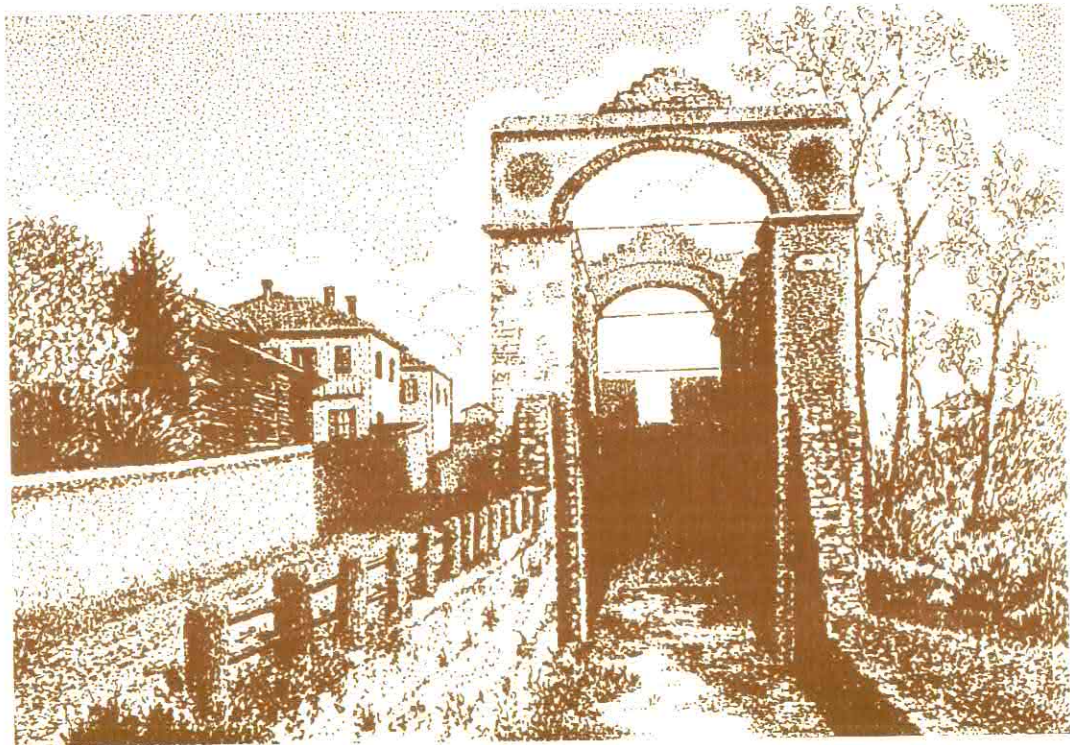
1996, Carlo Ferrario.

Sesto Calende, Imbarcadere, fine secolo scorso.



1996. Carlo Ferrario.

Sesto Calende, chiesa di San Donato, ante 1964.



1996. Carlo Ferrario.

Sesto Calende, Ipsostrada (demolita negli anni '60).